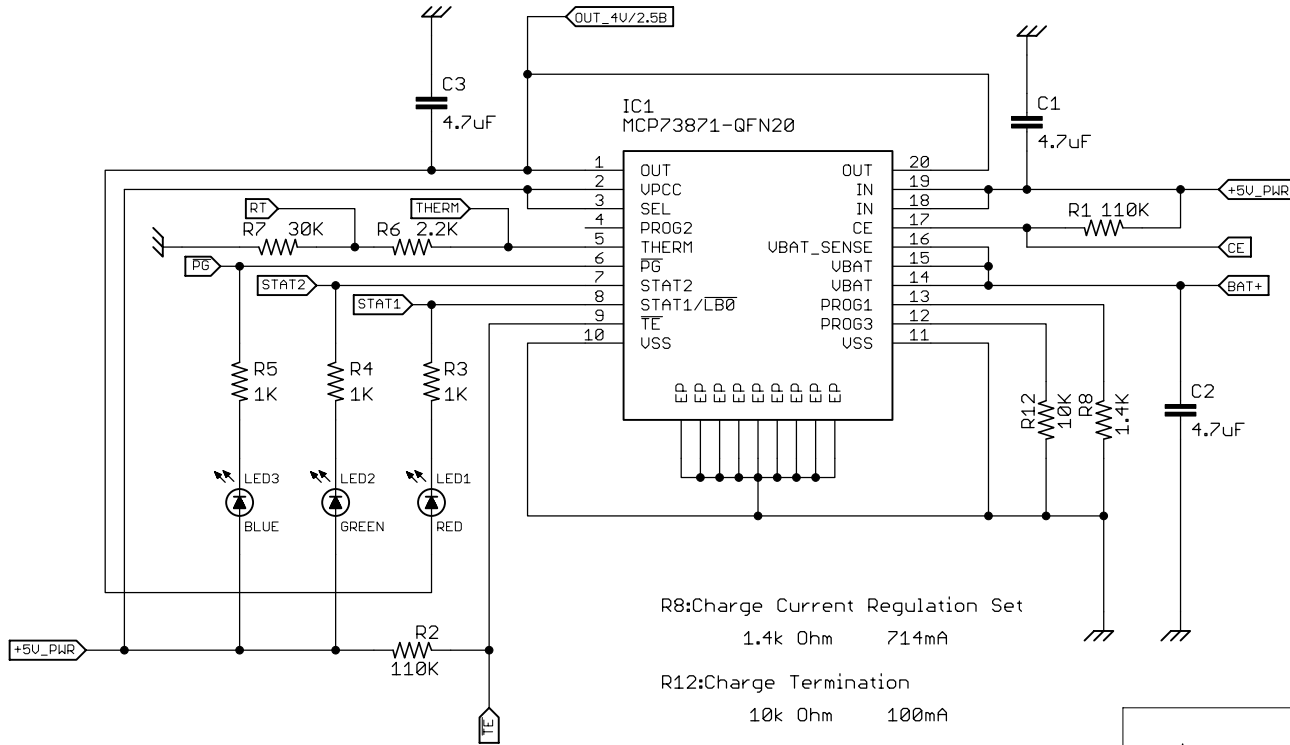


MCP73871 Charge status outputs (LED)

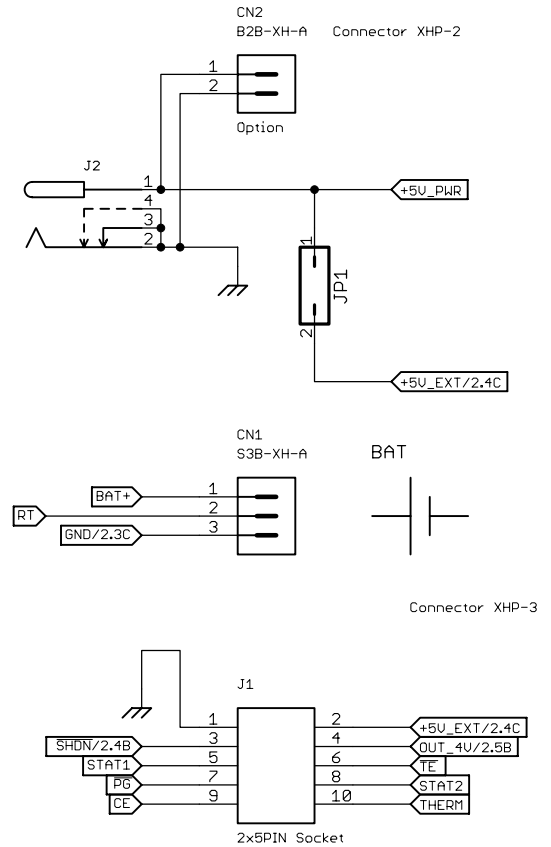
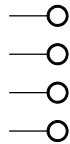
| Board Status | STAT1<RED> | STAT2<GREEN> | PG<BLUE> |
|--------------------------|------------|--------------|----------|
| Shutdown | OFF | OFF | OFF |
| No Input Power | OFF | OFF | OFF |
| Charging | ON | OFF | ON |
| Charge Complete | OFF | ON | ON |
| Temp. / Timer Fault | ON | ON | ON |
| (Low Battery Ind. *Opt.) | ON | OFF | OFF |
| No Battery Present | OFF | OFF | ON |



R8:Charge Current Regulation Set
1.4k Ohm 714mA

R12:Charge Termination
10k Ohm 100mA

Hole Drill 2.7 Diameter 7.5 Offset 2.5



Li-Ion / Li-Polymer Battery Charge Board

TITLE: LPBAT_CHARGE_BOARD01A

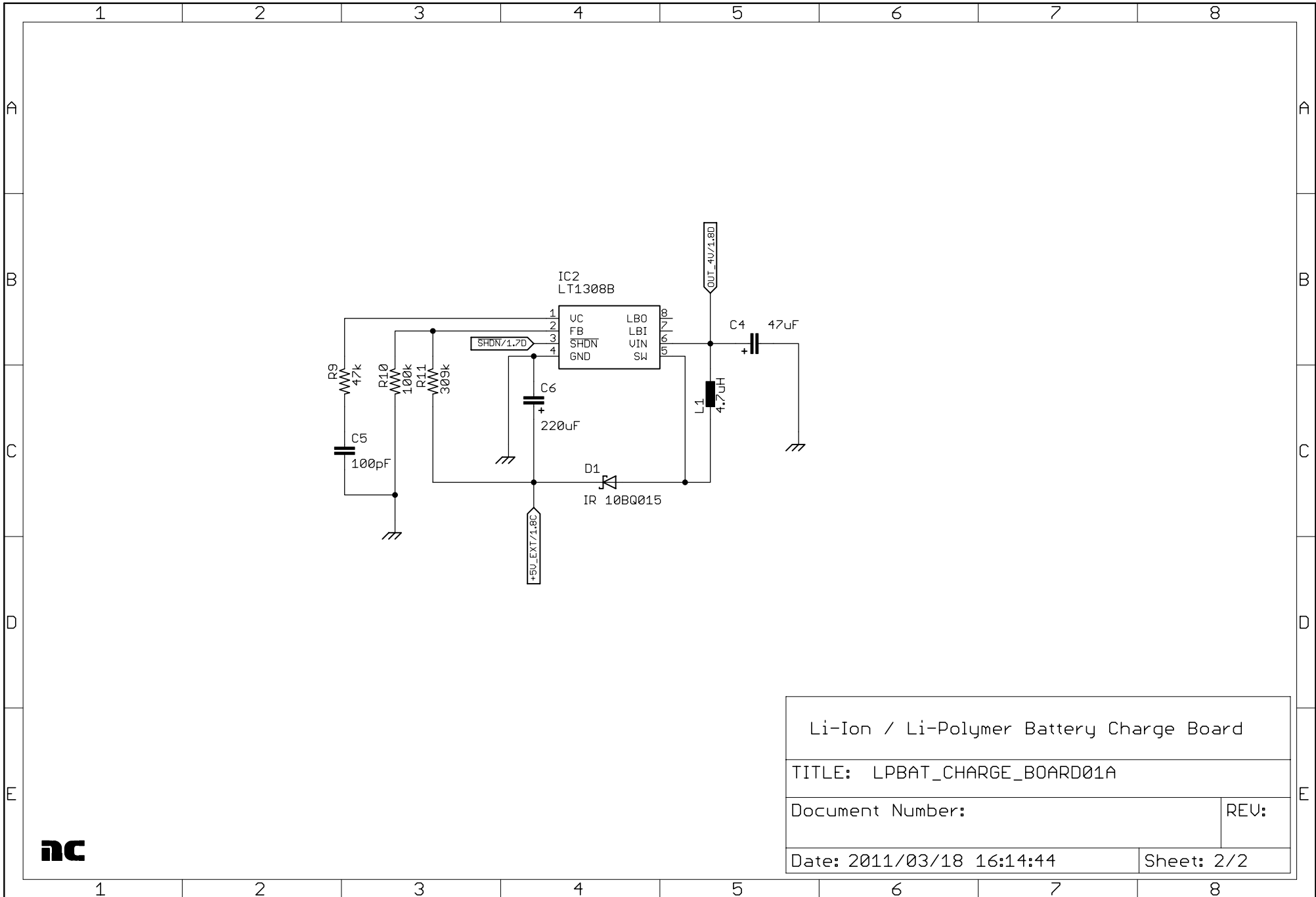
Document Number:

REV:

Date: 2011/03/18 16:14:44

Sheet: 1/2





| | |
|--|------------|
| Li-Ion / Li-Polymer Battery Charge Board | |
| TITLE: LPBAT_CHARGE_BOARD01A | |
| Document Number: | REV: |
| Date: 2011/03/18 16:14:44 | Sheet: 2/2 |